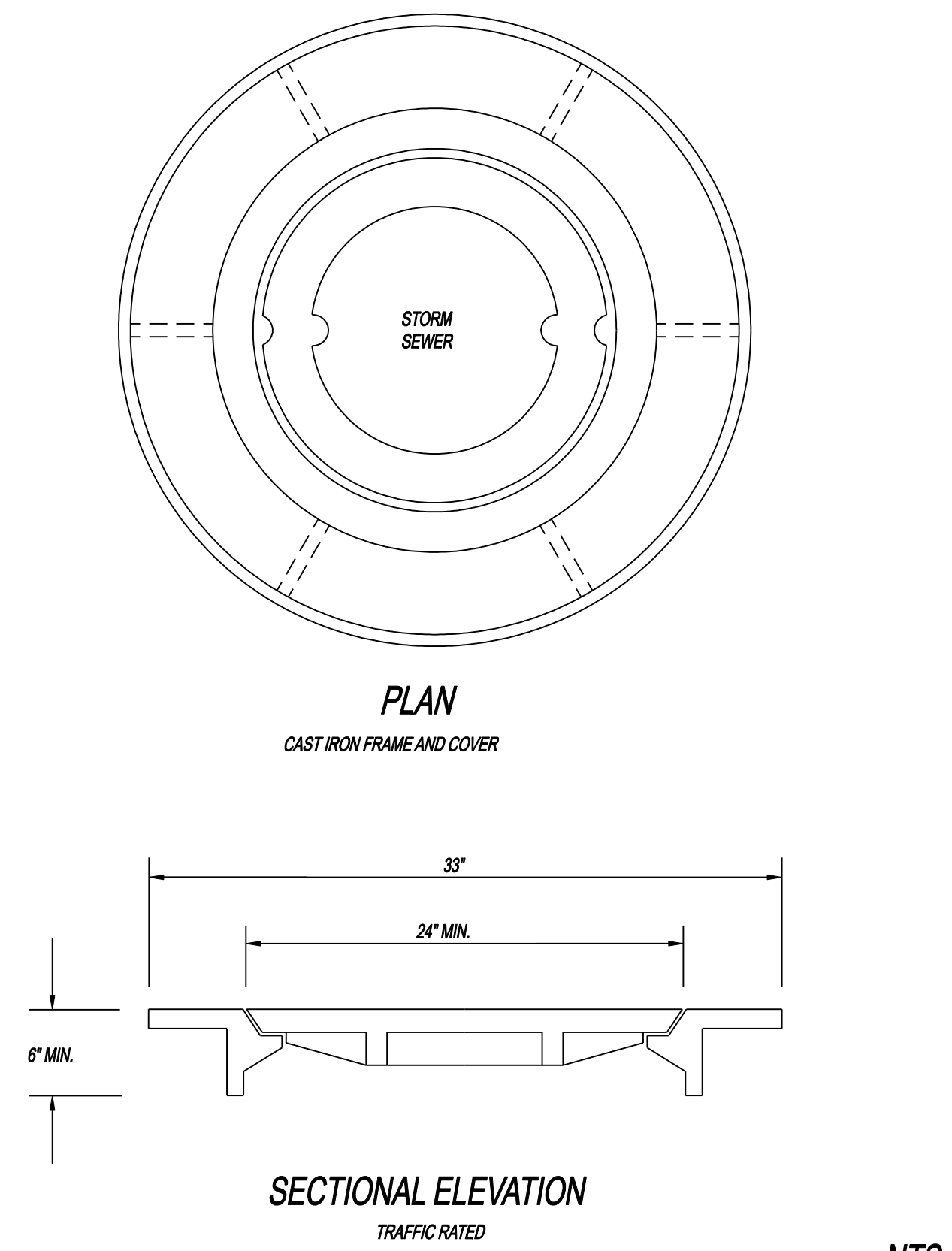
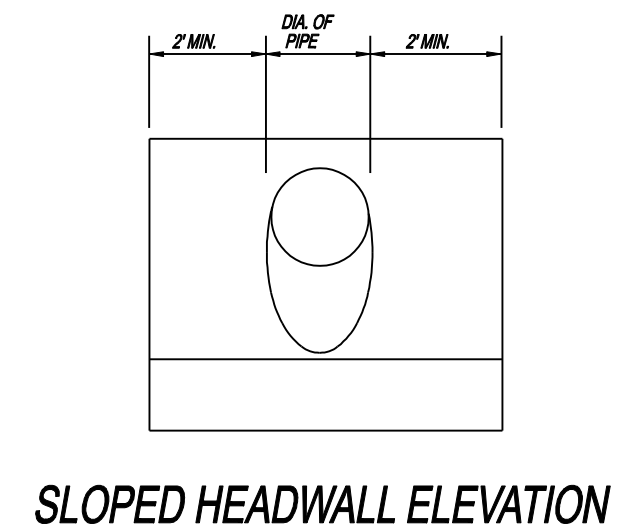
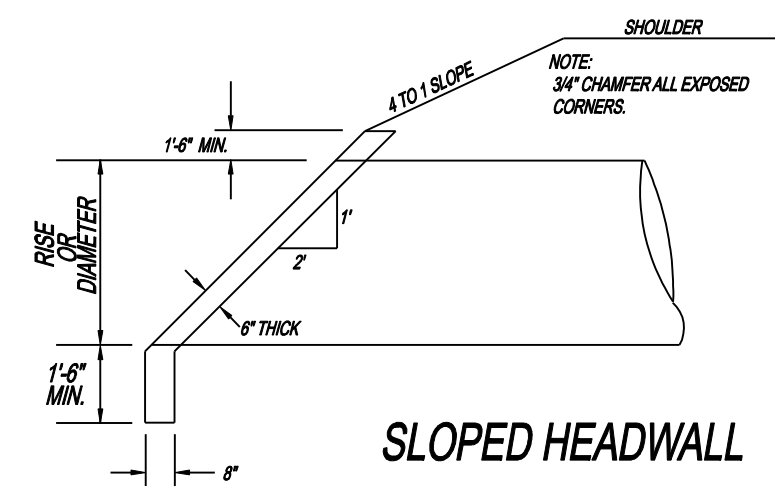


CAST IRON FRAME AND COVER DETAIL



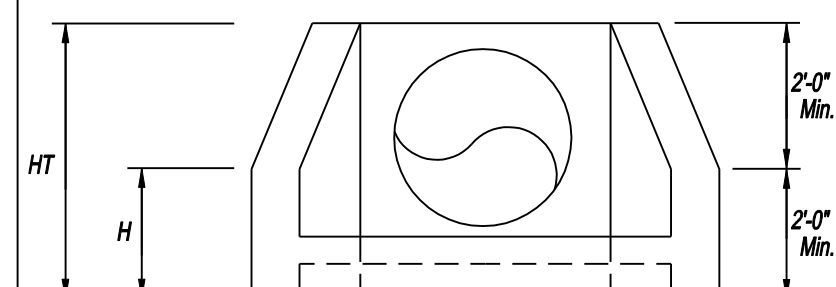
NTS

SLOPED HEADWALL DETAIL

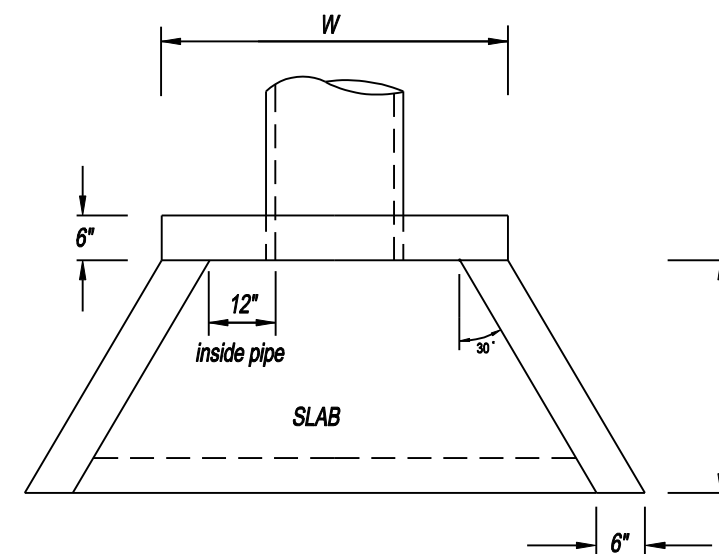


NTS

HEADWALL DETAIL



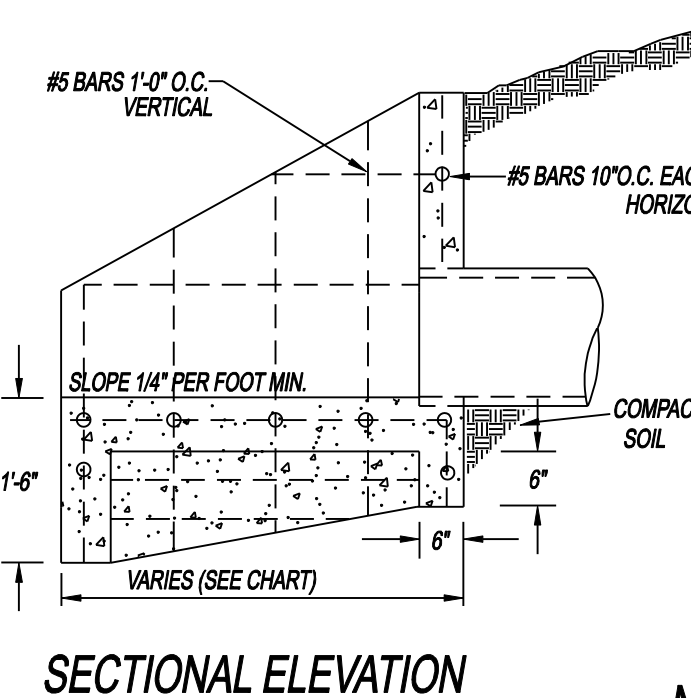
WINGED HEADWALL ELEVATION



PIPE SIZE CHART

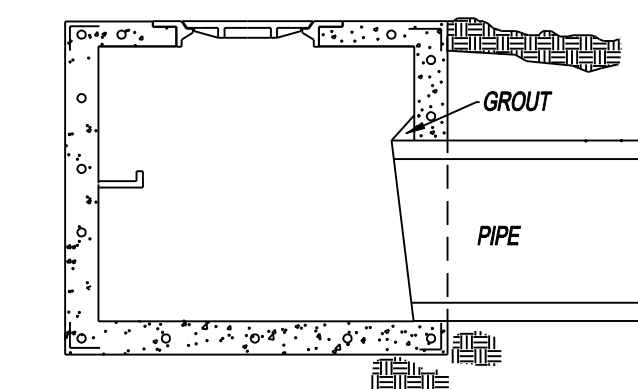
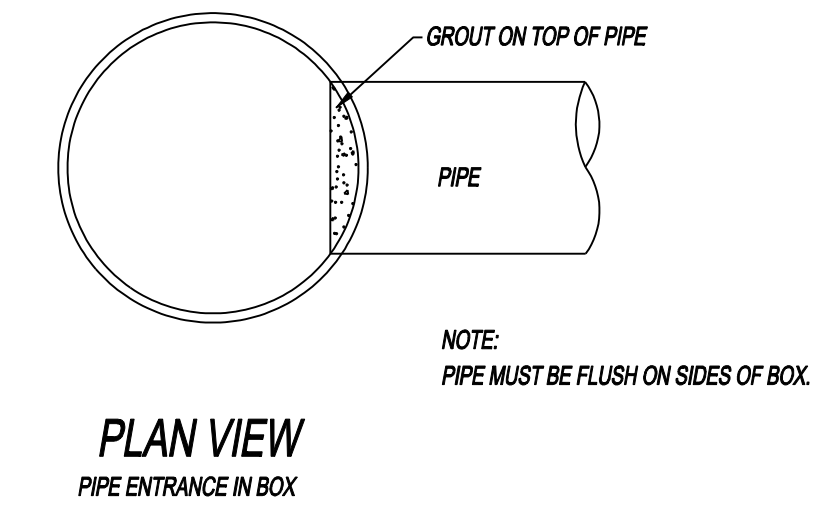
PIPE SIZE	A	W	H	HT
15 IN	4 FT	DIA+3 FT	2 FT	4 FT
18 IN	4 FT	DIA+3 FT	2 FT	4 FT
24 IN	4 FT	DIA+3 FT	2-6"	4 FT
30 IN	4.5 FT	DIA+3 FT	2-6"	4-6"
36 IN	5 FT	DIA+3 FT	3 FT	5 FT
42 IN	5 FT	DIA+3 FT	3 FT	5 FT
48 IN	5.5 FT	****	3 FT	6-6"
54 IN	6 FT	****	3-6"	7 FT
60 IN	6.5 FT	****	3-6"	7-6"
72 IN	7 FT	****	4 FT	8 FT

NOTE: HEADWALL HEIGHT MAY VARY FROM THE CHART WITH APPROVAL OR RECOMMENDATION OF THE CITY ENGINEER.



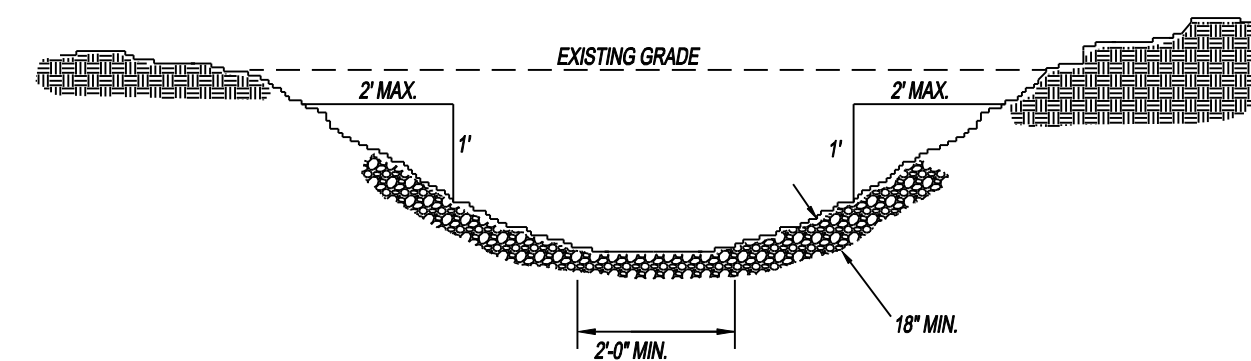
NTS

BEVELLED PIPE



ELEVATION

RIPRAP DITCH SECTION

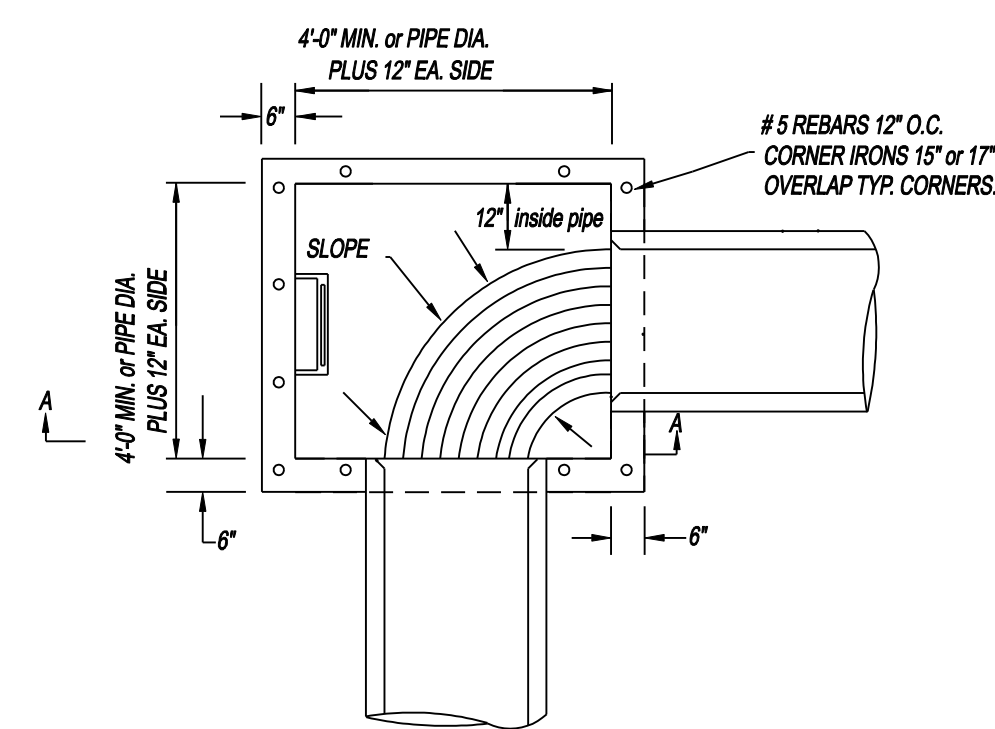


NOTE:
1. BOTTOM WIDTH IS DETERMINED BY ENGINEER.
2. A 3:1 SIDE SLOPE IS PREFERRED, BUT NO SLOPE CAN EXCEED 2:1.

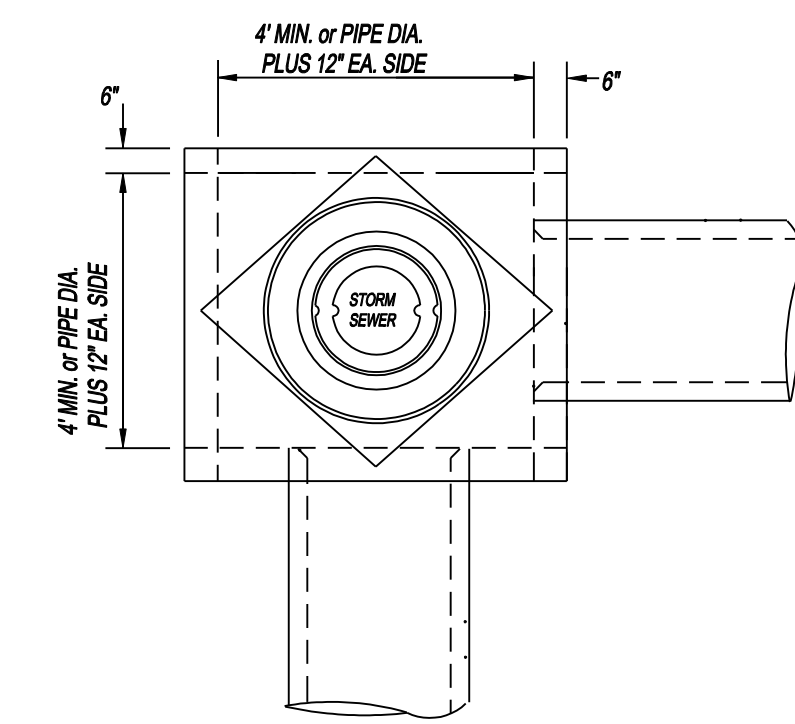
PIPE SIZE	BOTTOM WIDTH
15 IN	2 FT
18 IN	2 FT
24 IN	3 FT
30 IN	3 FT
36 IN	4 FT
42 IN	4 FT
48 IN	5 FT
54 IN	5 FT
60 IN	6 FT
72 IN	7 FT

NTS

JUNCTION BOX DETAIL

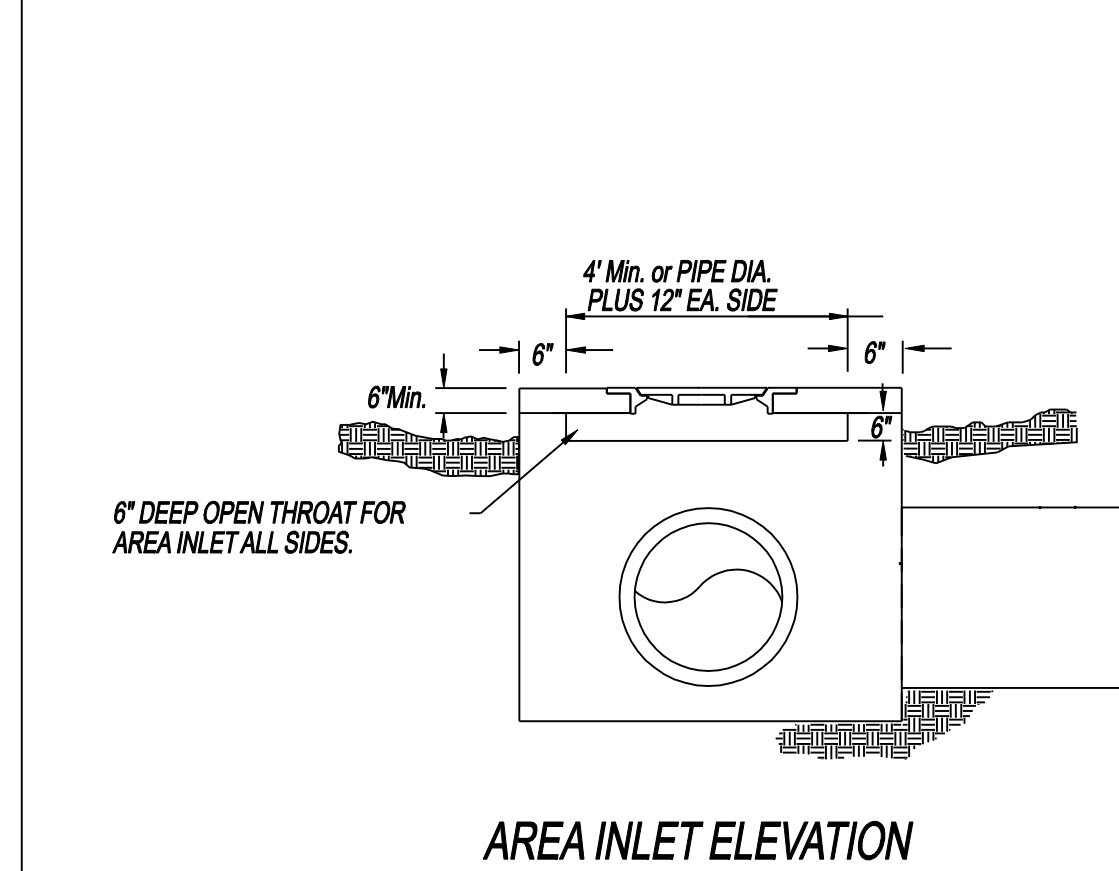
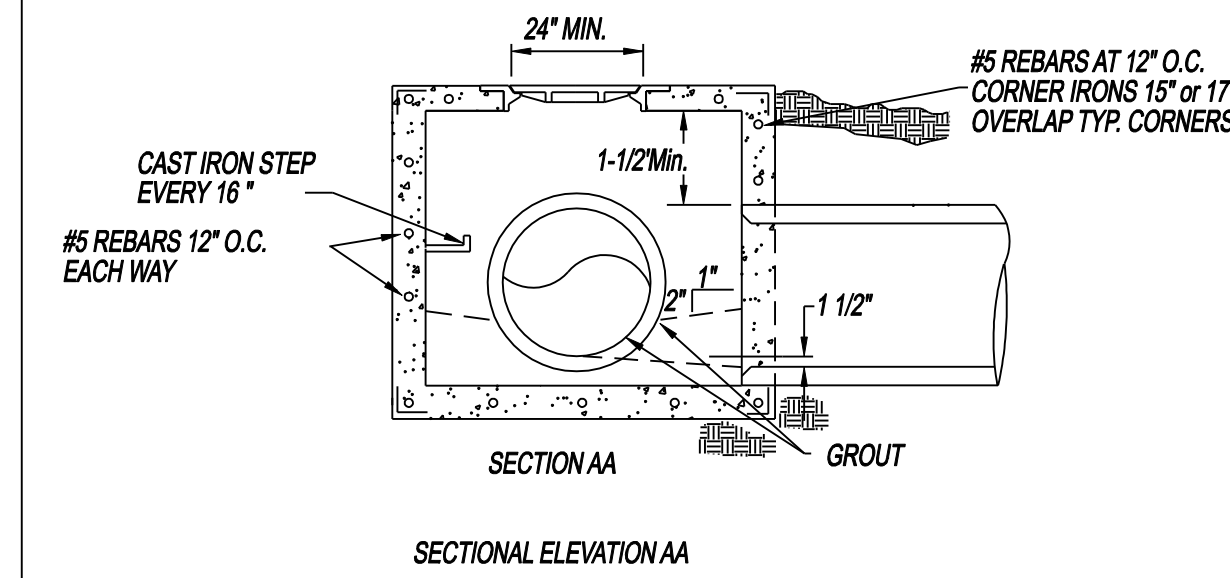


SECTIONAL PLAN



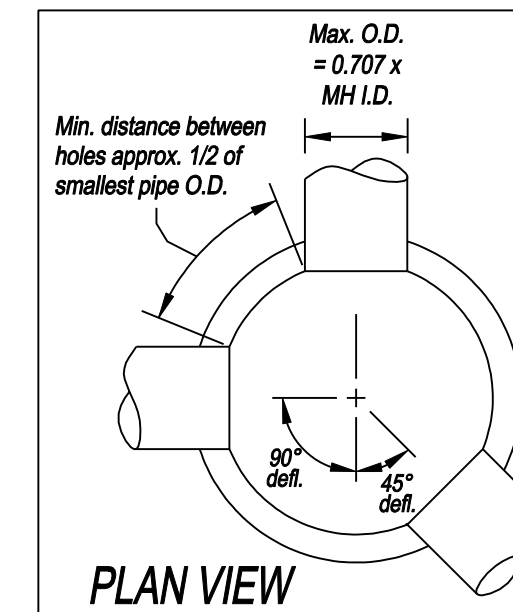
NTS

AREA INLET/JUNCTION BOX ELEVATION

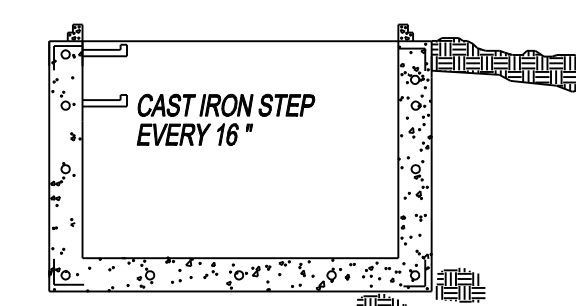


NTS

PRECAST MANHOLE



RISER DETAIL



MANHOLE DIA. (IN.)

Manhole Dia. (in.)	From Straight thru to 45° Defl.	If 90° Defl.	Hole Size (in.)
48	26.5	22.5	8-28
60	32.3	30.2	30-34
72	40.5	35.5	36-42

Manhole Dia. (in.)	From Straight thru to 45° Defl.	If 90° Defl.	Hole Size (in.)
48	26.5	22.5	8-28
60	32.3	30.2	30-34
72	40.5	35.5	36-42

* Opening = Pipe Dia. + (wall thickness x 2) + 3.5" free space

NTS

STANDARD DETAILS: STORM SEWER SHEET NO. 2 of 2

DEPARTMENT:	PUBLIC WORKS	REVISIONS:	
SCALE:	NTS		
IMPLEMENTED:	JANUARY 1, 2008		